

Door Closers for Walk-In Refrigerators & Freezers



HEAVY-DUTY SPRING ACTION CLOSE-MASTER™

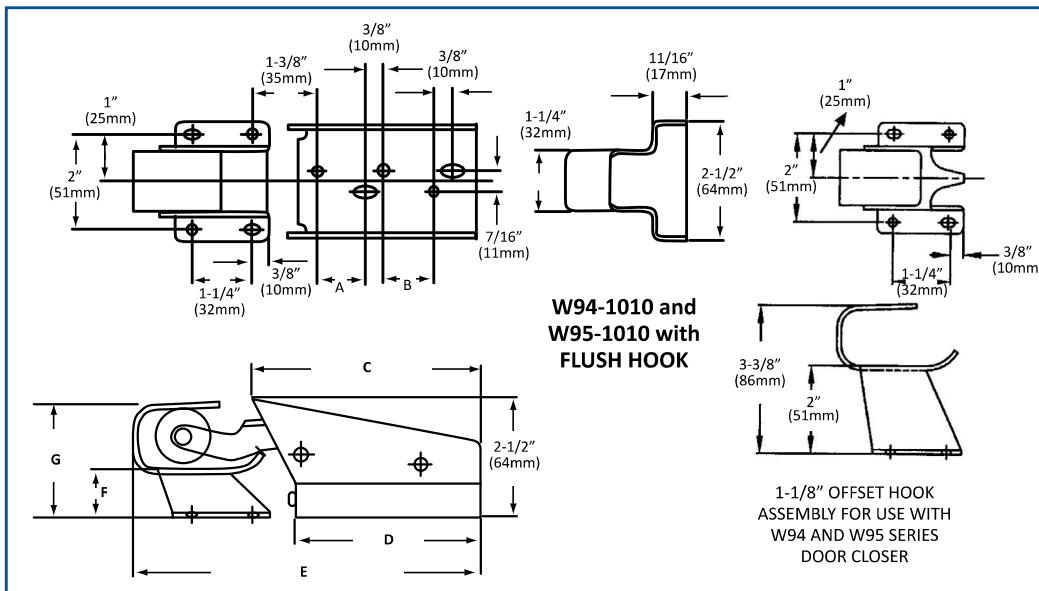
HEAVY-DUTY HYDRAULIC SNUGGER™

MODEL NO. W95-1010...Flush Offset
MODEL NO. W95-1020...1-1/8" (29mm) Offset

MODEL NO. W94-1010...Flush Offset
MODEL NO. W94-1020...1-1/8" (29mm) Offset

- **SOLID STAINLESS STEEL** construction throughout
- Concealed Mounting offers clean, tamperproof appearance
- Unique cover design provides easy installation
- Interchangeability - unique concealed mounting hole pattern allows Close-Master™ to easily replace all existing models in the field
- Cushioned rubber roller and unique spring design offers smooth, quiet, trouble-free operation
- Available in popular flush and 1-1/8" offsets
- Close-Master™ permits fast door closure and positive gasket seal, reducing energy costs

- **SOLID STAINLESS STEEL** housing mechanism
- Powerful gas-loaded hydraulic cylinder provides positive, smooth door closure
- Unique cover design provides for easy installation and concealed mounting
- Cushioned rubber roller and unique spring design offers smooth, quiet, trouble-free operation
- Popular Flush and 1-1/8" oversize hooks
- Interchangeability - unique concealed mounting hole pattern allows Snugger™ to easily replace all existing models in the field



W94-1010 and W95-1010 with FLUSH HOOK

REF.	W94-1010	W95-1010
A	1-3/8" (35mm)	1" (25mm)
B	2-7/16" (62mm)	1-1/16" (27mm)
C	7-7/16" (189mm)	4-13/16" (122mm)
D	6-1/2" (165mm)	3-7/8" (98mm)
E	9-15/16" (252mm)	7-1/4" (184mm)
F	1" (25mm)	1" (25mm)
G	3-3/8" (86mm)	2-3/8" (60mm)